

# ST. MARY OF THE ASSUMPTION SCHOOL

## Student Requirement List 2016 - 2017

### Girls Uniform

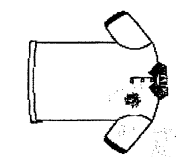
### Boys Uniform



www.schooluniformity.com • (323) 726 - 0882  
2109 W. Whittier Blvd. Montebello, CA 90640

#### Skort (Elastic Back)\*

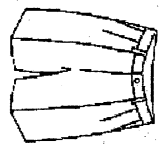
Grades: T-Kdgn - 8th  
Plaid: # 734-2  
Price:  
Sizes:  
4 - 12 ..... \$33.00  
14 - 18 ..... \$34.00  
20 - 24 ..... \$36.00



**Knit Shirt w/logo**  
Grades: T - Kdgn - 8th  
Colors: Lt. Blue  
Price:  
Sizes:  
Youth XS-XL ..... \$19.00  
Adult S - XL ..... \$21.00  
Adult 2XL ..... \$23.00

#### 4 - Pleat Skirt

Grades: 6th - 8th  
Plaid: # 734-2  
Price:  
Sizes:  
4 - 12 ..... \$35.00  
14 - 18 ..... \$36.00  
20 - 24 ..... \$37.00

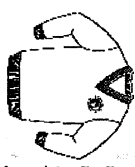


**Walking Shorts**  
Grades: T-Kdgn - 8th  
Color: Navy  
Price:  
Sizes:  
4 - 16 Reg. & Slim\* ..... \$21.00  
27 - 30 Prep\* ..... \$24.00  
Mens / Husky\* ..... \$26.00  
\*Longer Length add ..... \$ 2.00

#### \*Worn with Vest and Knit Shirt

#### Knit Shirt w/logo

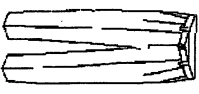
Grades: T - Kdgn - 8th  
Color: White  
Price:  
Sizes:  
Youth XS - XL ..... \$19.00  
Adult S - XL ..... \$21.00  
Adult 2XL ..... \$23.00



**Pullover\***  
Grades: T-Kdgn - 8th  
Color: Navy  
Price:  
Sizes:  
Youth XS - XL ..... \$28.00  
Adult S - 2XL ..... \$31.00



**Vest\***  
Grades: T-Kdgn - 8th  
Color: Navy  
Price:  
Sizes:  
Youth XS - XL ..... \$25.00  
Adult S - 2XL ..... \$28.00



**Twill pants**  
Grades: T-Kdgn - 8th  
Color: Navy  
Price:  
Sizes:  
4-16 Reg. & Slim ..... \$22.00  
27 - 30 Prep ..... \$25.00  
26 - 38 Husky ..... \$27.00  
31 - 46 Mens ..... \$29.00

### Girls Accessories

### P.E. Uniform

### Accessories

**\* Must have school emblem on outerwear**

#### \* MANDATORY Emblem

Small ..... \$ 4.00

#### HAIR ACCESSORIES

Grades: T-Kdgn - 8th  
Plaid: # 734-2  
Price:  
Style:  
Assorted ..... \$ 5.00 - \$ 7.00

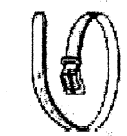
**Mesh Short w/logo**  
Grade: Kdgn - 8th (Not for T-K)  
Color: Navy  
Price:  
Size:  
Youth S - XL ..... \$13.00/16.00  
Adult S - XL ..... \$16.00  
Adult 2XL ..... \$18.00

**T-shirt w/logo**  
Grades: Kdgn - 8th (Not for T-K)  
Color: White  
Price:  
Size:  
Youth XS - XL ..... \$ 9.00  
Adult S - XL ..... \$10.00

**Socks/Tights**  
Grades: T-K - 1st 8th  
Colors: White White or Navy  
Price:  
Style:  
Knee-HI: \$.50/0ea..or .3pr/14.00  
Tights (White or Navy) \$ 9.00

**Sweat Top w/logo**  
Grades: Kdgn - 8th (Not for T-K)  
Color: Navy  
Price:  
Size:  
Youth XS - XL ..... \$19.00  
Adult S - XL ..... \$21.00  
Adult 2XL ..... \$23.00

**Sweat Pants w/logo**  
Grades: Kdgn - 8th (Not for T-K)  
Color: Navy  
Price:  
Size:  
Youth XS - XL ..... \$19.00  
Adult S - XL ..... \$21.00  
Adult 2XL ..... \$23.00



**Belts**  
Colors: Black and Navy  
Price:  
Style:  
Leather Belt ..... \$10.00  
Stretch Belt ..... \$ 7.00





**NOTES:**

**GIRLS MASS UNIFORM:**

K-8TH Plaid Uniform and White Knit.  
Navy Cardigan, Vest or Pullover.

**BOYS MASS UNIFORM**

Navy Twill Pants, Lt. Blue Knit Shirt.  
Navy Cardigan, Vest or Pullover.

**All Sweaters and Jackets  
MUST have Emblems**

**SOCKS:**

NO ankle socks will be allowed.  
Girls **MUST** wear Knee-Hi Socks

**BOYS & GIRLS P.E. SHOES:**

**BOYS:** Solid Black Nike or Reebok  
Cross-Country Running Shoes.  
**GIRLS:** Black Nike Cross-Country  
Running Shoes.

Athletic Shoes are only worn for P.E.



[www.schooluniformity.com](http://www.schooluniformity.com)

Store (323) 726 - 0882

Fax (323) 726 - 0933

NO PERSONAL CHECKS ACCEPTED

We honor Visa, Discover, Mastercard,  
American Express and Debit cards.

Phone, mail and fax orders are welcomed  
\*\*\*NO COD's\*\*\*

**PLEASE ALLOW 4-6 WEEKS FOR ALL OUT OF  
STOCK ITEMS PLACED AFTER JULY 1**

Add 9.00% sales tax and  
a \$11.00 UPS delivery charge.

**(UPS CHARGES FOR LARGER  
ORDERS MAY VARY)**

**LAYAWAYS MAY BE PLACED BEGINNING  
MAY 1ST WITH A 20% DEPOSIT OR  
A MINIMUM DEPOSIT OF \$20.00**

**ALL LAYAWAYS MUST BE PICKED UP BY  
OCTOBER 1ST.**

**DEPOSITS ARE NON REFUNDABLE!!!**

**ALL RETURNS/EXCHANGES MUST BE MADE  
WITHIN NINETY (90 DAYS).  
ALL RETURNED ITEMS MUST BE  
IN ORIGINAL CONDITION**

**AND MUST BE ACCOMPANIED BY RECEIPT.  
NO REFUNDS WILL BE GIVEN  
WITHOUT RECEIPT.**

Prices subject to change without notice.  
If you have any questions concerning your  
uniform, please call our Company instead of  
the school.

# ST. MARY OF THE ASSUMPTION SCHOOL

7218 S. PICKERING AVENUE  
WHITTIER, CA 90602 (562) 698-0253

Your school uniforms may be purchased at  
our store throughout the year.

Our regular store hours are:

**MONDAY thru FRIDAY**  
10:00 a.m. to 5:00 p.m.  
**SATURDAY**  
10:00 a.m. to 3:00 p.m.

**EXTENDED AUGUST HOURS**

August 1st thru August 31st  
**MONDAY thru FRIDAY**  
10:00 a.m. to 6:00 p.m.  
**SATURDAY**  
10:00 a.m. to 4:00 p.m.  
**SUNDAY**  
11:00 a.m. to 2:00 p.m.

**ANNUAL 20% SALES IN  
APRIL, JUNE AND DECEMBER**

For your convenience we will be selling  
uniforms at your school on:

Tuesday July 12th 4:00 - 6:00  
Wednesday July 13th 4:00 - 6:00